

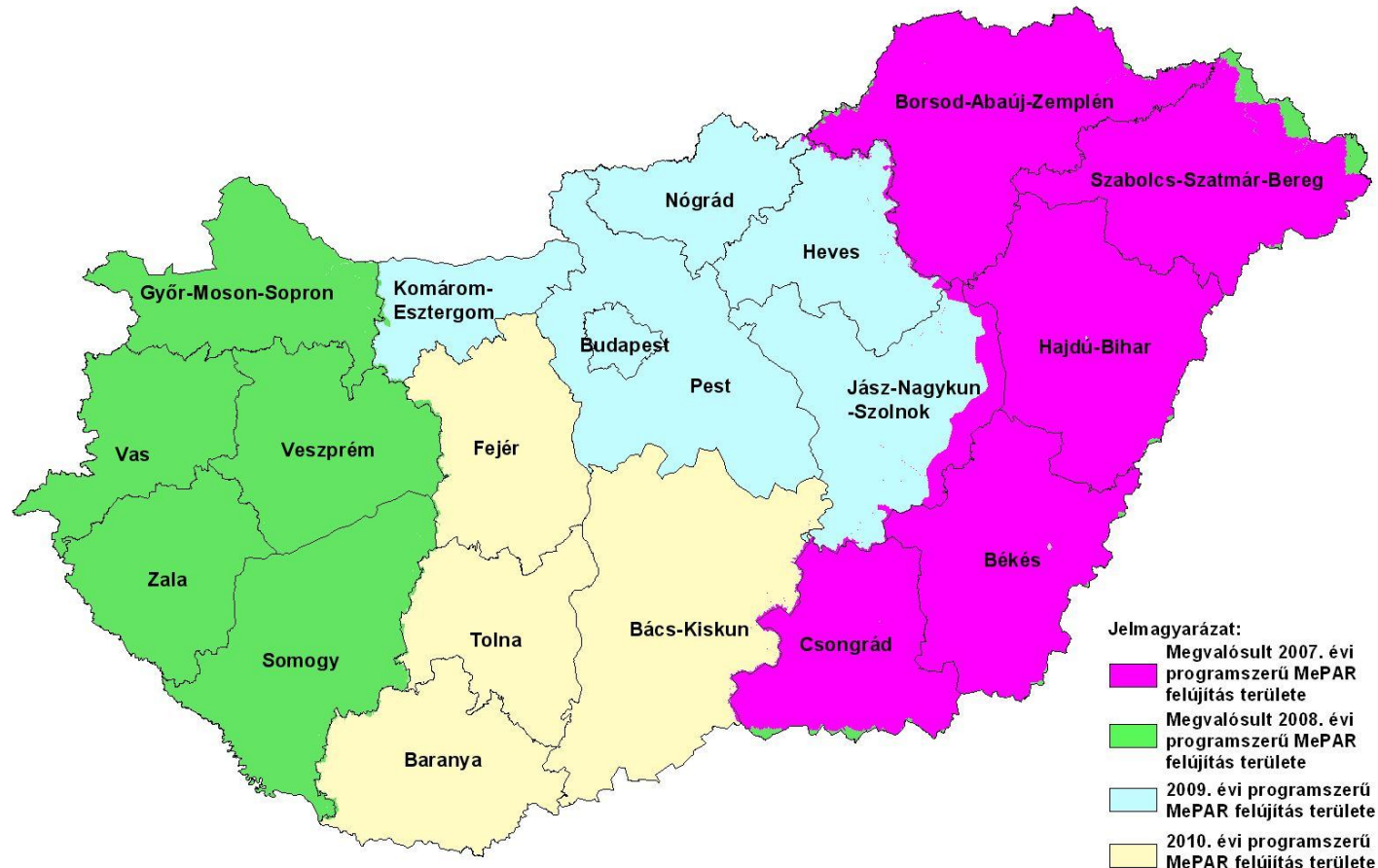


Update of LPIS

Ákos Szerletics
8-9 April 2010.

Update campaigns of the LPIS

An LPIS update plan was drawn up for the period of 2007-2010; in this four-year period, the LPIS is completely updated based on new orthophoto imagery



Change management of LPIS – farmer requests

- Farmers may submit applications for the modification of LPIS data
- Applications have to be submitted electronically
- If submitted with the Single Application – application is handled for the given year
- If submitted later - application is handled for the next year

Change management of LPIS – farmer requests

- Farmers' applications are forwarded from the Paying Agency to the Institute of Geodesy, Cartography and Remote Sensing (FÖMI)
- The Institute delivers its technical opinion based on GIS and ortophoto analysis
- Based on this opinion, the Paying Agency makes a formal decision (with the farmer's right to appeal)
- LPIS is adjusted accordingly

Change management of LPIS – on-the-spot controls

- During their field visits, on-the-spot controllers may experience differences between the data stored in the LPIS and the actual use of agricultural land
- In these cases, they make note of the area concerned with GPS/PDA
 - Area measurement data
 - Written remarks
- After the on-the spot control campaign, this data is evaluated by FÖMI on a case-by-case basis
- LPIS is adjusted accordingly

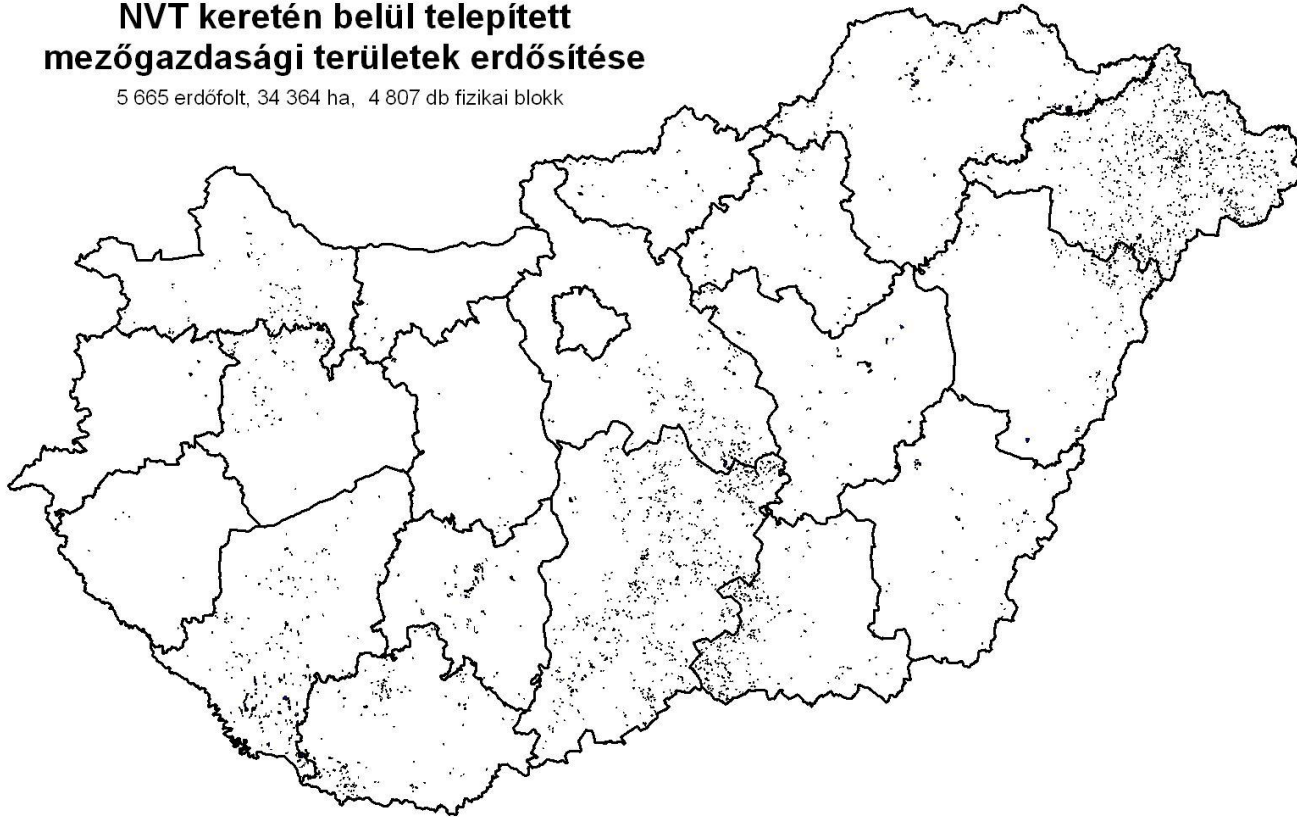
Change management of LPIS – remote sensing controls

- Observations made in the course of remote sensing controls are directly analyzed by FÖMI

Change management of LPIS – afforestation

NVT keretén belül telepített mezőgazdasági területek erdősítése

5 665 erdőfolt, 34 364 ha, 4 807 db fizikai blokk

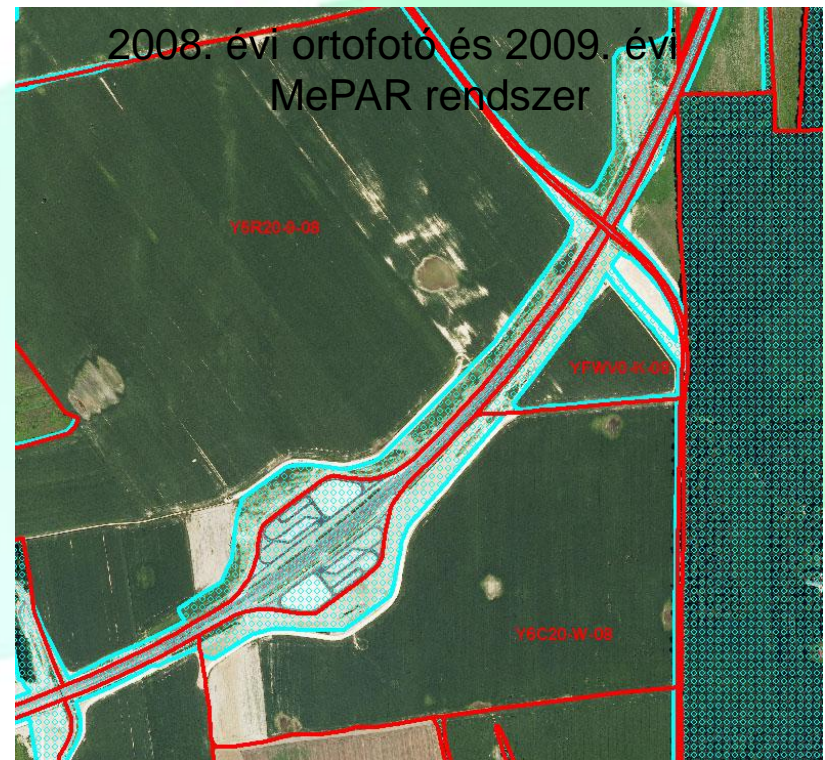
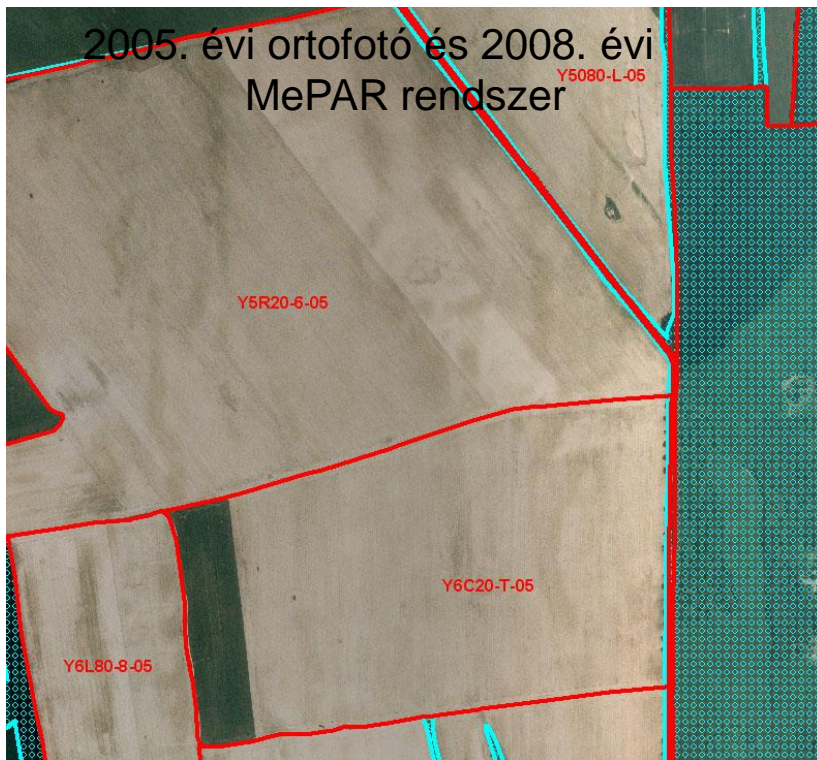


- Afforested areas are not eligible in SAPS
- Areas afforested with Community aid are modified to non-eligible land in LPIS on a yearly basis

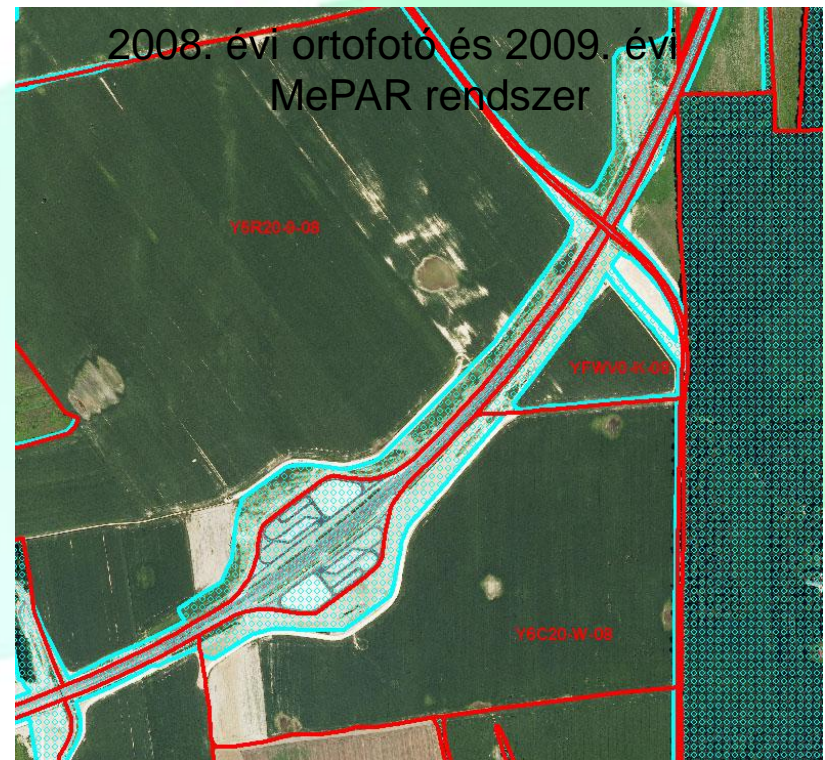
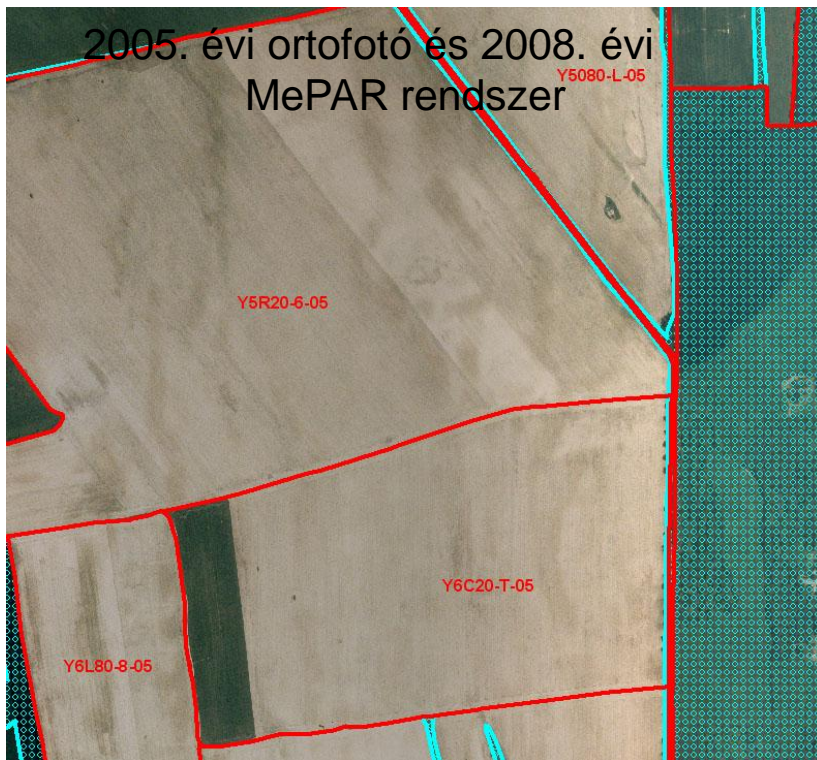
„Closure” of blocks not applied for in 2004-2008



Update of LPIS – new motorways

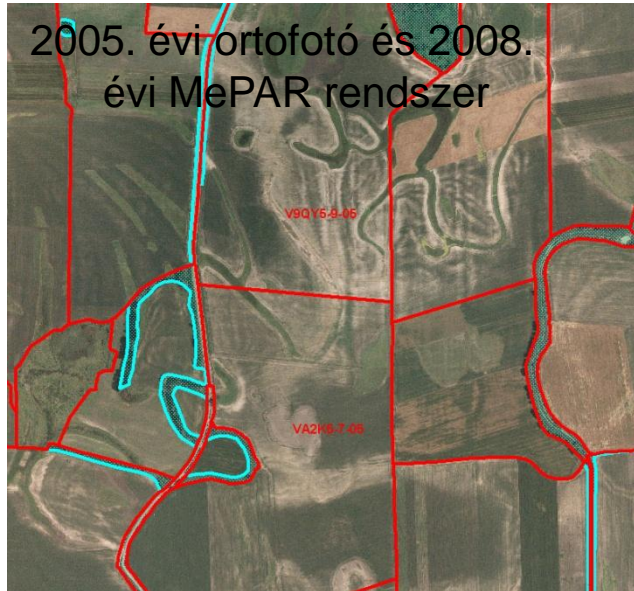


Update of LPIS – new motorways

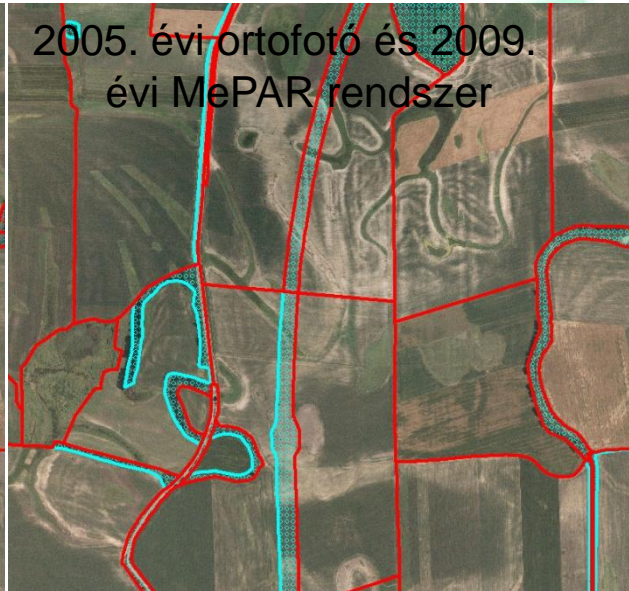


Update of LPIS – new motorways

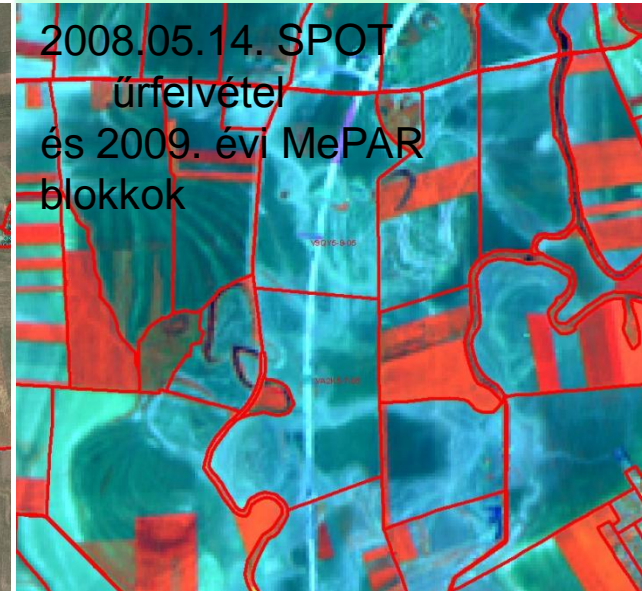
2005. évi ortofotó és 2008. évi MePAR rendszer



2005. évi ortofotó és 2009. évi MePAR rendszer



2008.05.14. SPOT
űrfelvétel
és 2009. évi MePAR
blokkok





Thank you for your attention!